

Bax
Rabbit Monoclonal antibody(Mab)
Catalog # AD80053

Specification

Bax - Product info

Application	IHC-P
Primary Accession	Q07812
Reactivity	Human
Host	Rabbit
Clonality	Monoclonal
Calculated MW	21184

Bax - Additional info

Gene ID	581
Gene Name	BAX
Other Names	
Apoptosis regulator BAX, Bcl-2-like protein 4, Bcl2-L-4, BAX, BCL2L4	

Dilution

IHC-P~~Ready-to-use

Storage

Maintain refrigerated at 2-8°C

Precautions

Bax Antibody is for research use only and not for use in diagnostic or therapeutic procedures.

Bax - Protein Information

Name BAX

Synonyms
Function

BCL2L4
Plays a role in the mitochondrial apoptotic process. Under normal conditions, BAX is largely cytosolic via constant retrotranslocation from mitochondria to the cytosol mediated by BCL2L1/Bcl-xL, which avoids accumulation of toxic BAX levels at the mitochondrial outer membrane (MOM) (PubMed:[21458670](#)). Under stress conditions, undergoes a conformation change that causes translocation to the mitochondrion membrane, leading to the release of cytochrome c that then triggers apoptosis. Promotes activation of CASP3, and thereby

Cellular Location

Tissue Location

apoptosis.

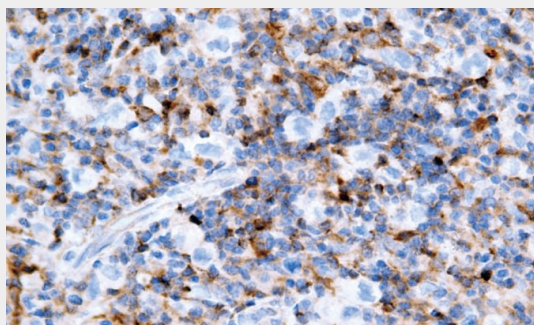
Isoform Alpha: Mitochondrion outer membrane; Single-pass membrane protein. Cytoplasm. Note=Colocalizes with 14-3-3 proteins in the cytoplasm. Under stress conditions, undergoes a conformation change that causes release from JNK-phosphorylated 14-3-3 proteins and translocation to the mitochondrion membrane **Isoform Gamma:** Cytoplasm. Expressed in a wide variety of tissues. **Isoform Psi** is found in glial tumors. **Isoform Alpha** is expressed in spleen, breast, ovary, testis, colon and brain, and at low levels in skin and lung. **Isoform Sigma** is expressed in spleen, breast, ovary, testis, lung, colon, brain and at low levels in skin. **Isoform Alpha** and **isoform Sigma** are expressed in pro- myelocytic leukemia, histiocytic lymphoma, Burkitt's lymphoma, T- cell lymphoma, lymphoblastic leukemia, breast adenocarcinoma, ovary adenocarcinoma, prostate adenocarcinoma, lung carcinoma, epidermoid carcinoma, small cell lung carcinoma and colon adenocarcinoma cell lines.

Bax - Protocols

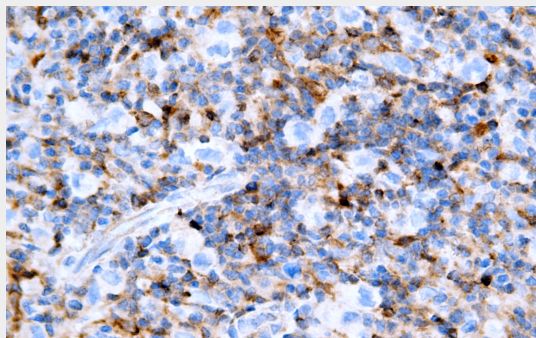
Provided below are standard protocols that you may find useful for product applications.

- [Western Blot](#)
- [Blocking Peptides](#)
- [Dot Blot](#)
- [Immunohistochemistry](#)
- [Immunofluorescence](#)
- [Immunoprecipitation](#)
- [Flow Cytometry](#)
- [Cell Culture](#)

Bax - Images



Hodgkins lymphoma



Immunohistochemical analysis of paraffin-embedded Hodgkin lymphoma tissue using AD80053 performed on the Abcarta® FAIP-30 Fully automated IHC platform. Tissue was fixed with formaldehyde at room temperature, antigen retrieval was by heat mediation with a EDTA buffer (pH 9.0). Samples were incubated with primary antibody (Ready-to-use) for 15 min at room temperature. AmpSee™ Detection Systems [Abcepta:AR005] was used as the secondary antibody.